



SINCE 1844

ROCKAWAY TOWNSHIP

65 MOUNT HOPE ROAD, ROCKAWAY, NEW JERSEY 07866

DEPARTMENT OF COMMUNITY SERVICES

Joseph S. Fiorilla, Director

Peter N. Tabbot, Health Officer/R.E.H.S.

Notification for the 2016 Gypsy Moth Control Program

Gypsy moth egg mass surveys, conducted by the New Jersey Department of Agriculture (NJDA), indicate that gypsy moth populations will be very high during May and June 2016. Leaf feeding by the caterpillars of this pest will cause severe defoliation in many of our trees. Consequently, Rockaway Township has entered into a cooperative control program with the NJDA and the US Forest Service. This program is being operated on an integrated approach, utilizing a pesticide with a naturally occurring active ingredient to reduce defoliating populations of this forest pest. Aerial spraying will be employed around residential and recreational areas to reduce tree loss, while natural control agents will be encouraged to reduce pest levels in remote, uninhabited areas.

In your area, only the biological insecticide *Bacillus thuringiensis var. kurstaki* (FORAY76B, EPA Reg. # 73049-49) will be applied once by aircraft at a dosage rate of 38 B.I.U.'s (64 oz.) per acre by **Downstown Airport Inc. (DEP# 90029), 339 Harding Highway, Vineland NJ 08360, 856-697-3300**. The spray operation is expected to begin on or after **May 16, 2016 through June 15, 2016** or until completion. The exact date of application will depend on climatic conditions and the development of the caterpillars and trees in your area. A municipal contact person may be reached through the Division of Health, 973-983-2848, 65 Mt. Hope Road, Rockaway, NJ 07866, to answer any questions you may have about the exact timing and dates of treatment.

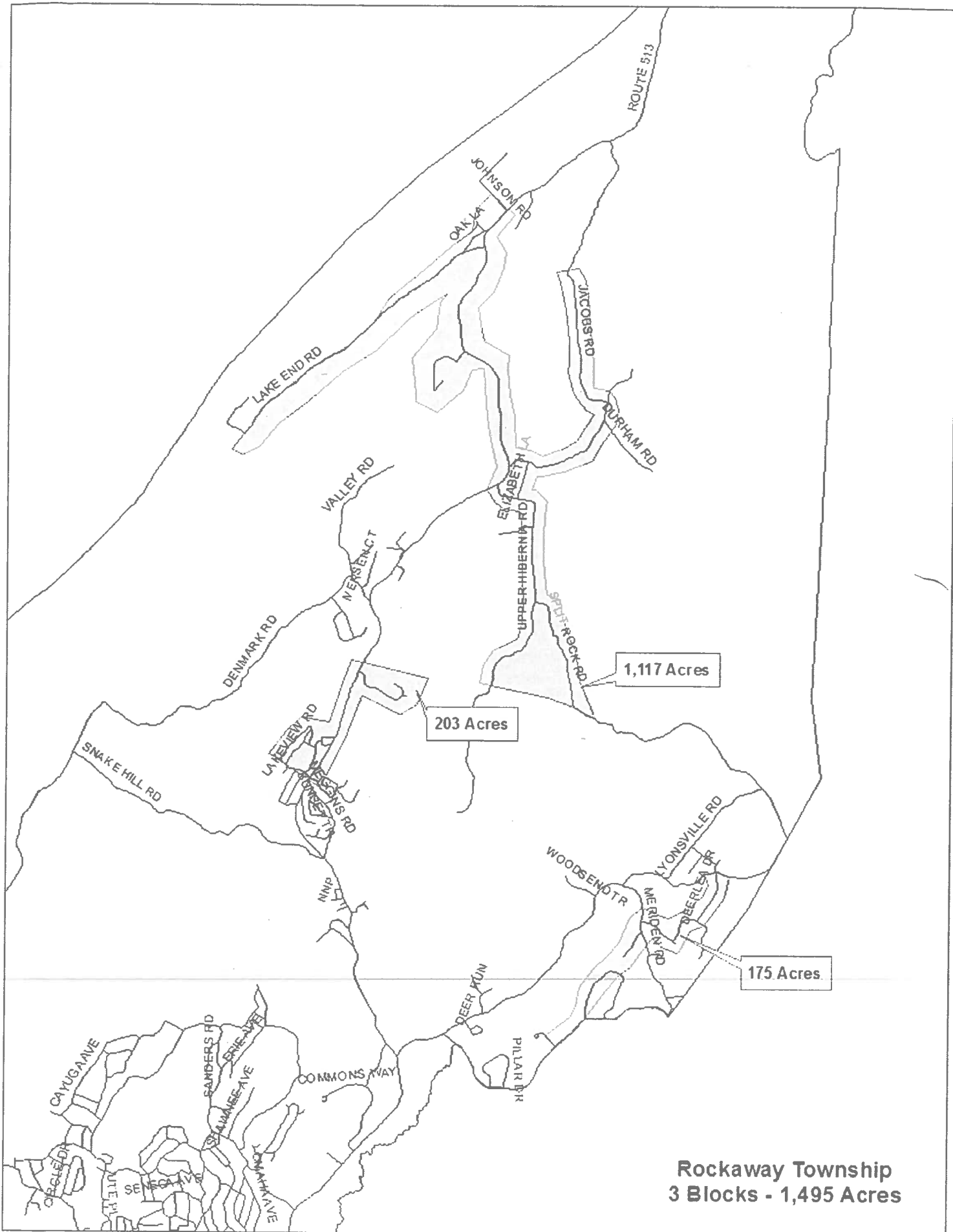
To ensure precise placement of the spray material, aircraft will conduct treatments only when there is little or no wind. Daily spray operations normally are conducted early in the morning between 5:30 a.m. and 2:00 p.m. and possibly between 5:00 p.m. and 8:00 p.m. in the evening. However, **no pesticide application for gypsy moth control will take place between 6:00am and 7:00am**.

Although *B.t.k.* use has very minimal risk to humans or wildlife, individuals wishing **no exposure** to either themselves or their children, before or after this one hour no spray shutdown time, should remain indoors during the treatment. If you must go outside, wear rain gear or use an umbrella to prevent contact with the spray material, especially if you hear the aircraft working in your area.

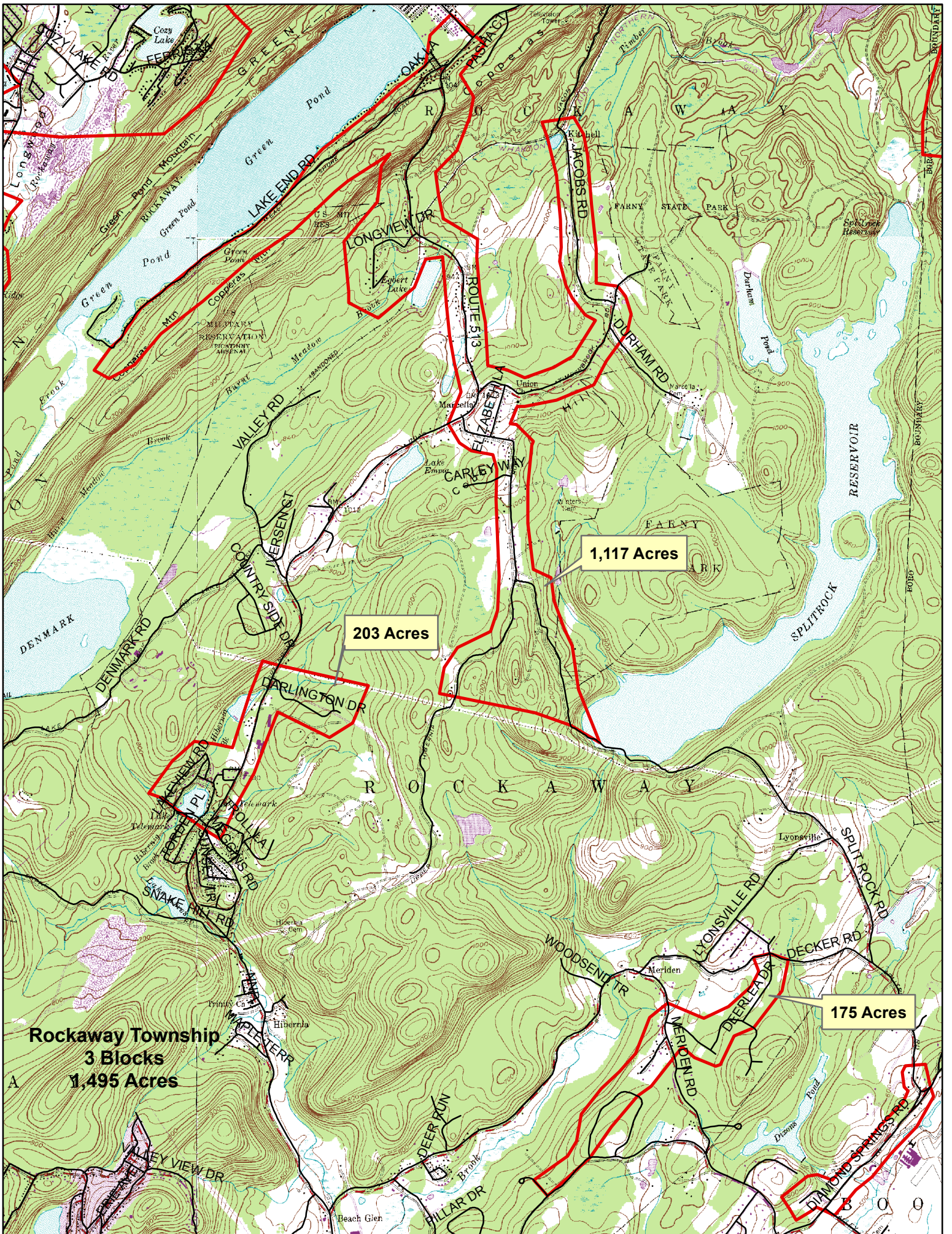
Trained personnel from the NJDA and Rockaway Township will assist in the program. Pilots will be carefully briefed to insure that the spray material is being applied in the proper areas as directed. The program is being conducted to protect and preserve affected municipalities and your valuable shade tree resources. Your understanding and cooperation is very much appreciated.

Individuals seeking additional information about pesticides may contact the National Pesticide Information Center at 1-800-858-7378. For emergencies, call the New Jersey Poison Information and Education System at 1-800-222-1222. For pesticide regulation information, pesticide complaints and health referrals, call the New Jersey Pesticide Control Program at 609-984-6507.

Upon request, the pesticide applicator or applicator business shall provide a resident with notification 12 hours prior to the application, except for Quarantine and Disease Vector Control only, when conditions necessitate pesticide applications sooner than that time. Additional information about the program is also available on the NJDA website at: www.state.nj.us/agriculture/divisions/pi/prog/gypsymoth.html.



Rockaway Township
3 Blocks - 1,495 Acres



1,117 Acres

203 Acres

175 Acres

Rockaway Township
3 Blocks
1,495 Acres